

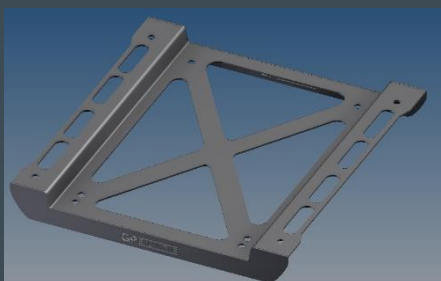


TOYOTA YARIS GR SEAT LOWERING FRAME

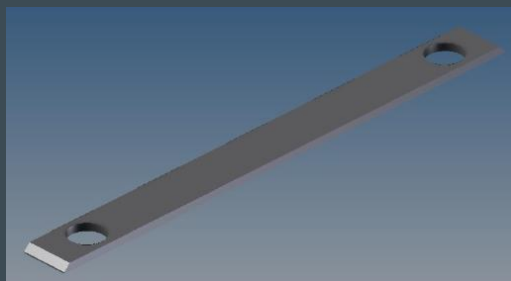
Installation Guide – Driver Side

PARTS INCLUDED IN THE KIT

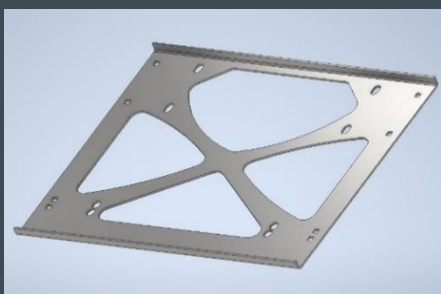
| Part no. | Part name | Amount included |
|----------|------------------------------------|-----------------|
| 01 | Lower seat frame plate | 1 |
| 02 | Upper seat frame plate driver side | 1 |
| 03 | Seat handle | 1 |
| 04 | Plastic strip | 2 |
| 05 | M10 bolt | 4 |
| 06 | 10mm washer | 4 |
| 07 | M10 nut | 4 |
| 08 | 8mm washer | 16 |
| 09 | M8 nut | 8 |
| 10 | Small parker screw | 2 |



Part 01: lower seat frame plate



Part 04: plastic strip



Part 02: upper seat frame plate

TOOLS REQUIRED

- T50 torx key - Could either be used with a ratchet or a torx wrench
- 13mm spanner or socket
- 12mm spanner - A ratchet won't fit in this application
- Small flat head screwdriver
- Zip ties
- Side cutters

INSTALLATION



STEP 1

Make sure that the ignition is turned off before moving on to the next step. Do not turn the ignition on during the installation process.

STEP 2

Put the seat in its most far back position and raise the seat height. Then disconnect the electrical cables underneath the seat. The plugs are held together by a clip, use your finger or a small screw driver to press in the release part of the clips.



STEP 3

Remove the four T50 Torx bolts shown in the picture. Start on the rear and then remove the front bolts. This prevents the seat from falling over while working on it. Before removing the seat entirely, make sure there is a protective cloth over the door sill. To prevent possible paint damage while removing the seat.





STEP 4

Once the seat has been removed, take off the plastic trim as shown on the picture on the left. Do this on the rear of the seat and on the seat rails.

These pieces won't be reused once the seat is reinstalled.



STEP 5

Unclip the plugs underneath the seat from their white plastic holder. They will be relocated once the seat is reinstalled into the car.

Do **NOT** cut any wires.



STEP 6

Remove the seat rails. This is done by removing the eight 12mm nuts, four on each side of the seat as shown on the picture. Make sure that all eight are removed before removing the rails from the seat. The rails is now disconnected from the seat.





STEP 7

To remove the seat adjusting handle, use a small flat head screwdriver to push up this tab that is located inside the seat rail as shown in this picture. Once the tab is pushed up you can remove the handle from this rail. Repeat this procedure for the other side. The seat handle can be kept as spare as it will be replaced later on by part 03.





STEP 8

Parts needed:

- 1x Part 01: Lower seat frame plate
- 4x Part 05: M10 bolt
- 4x Part 07: M10 nut with nylon ring
- 4x Part 06: 10MM washer
- The seat rails.



To mount the seat rails to the frame (part 001) make sure that the locator pin on the seat rails is in the second hole as shown here left.



Use the supplied M10 bolts on the seat rails, and the nut and washer on the underside to fasten the seat rails to the frame. Make sure that the sides of the M10 bolt on the topside run longitudinally aligned with the seat rails. This is to ensure that the seat rails can slide freely.

Do this for the second seat rails as well.





STEP 9

Installation into the vehicle.

Parts needed:

2x part 04: plastic strip

Before placing the frame in the car make sure there is a protective mat over the cars door sill. Then put the lower part of the seat frame with the seat rails into the car as shown here. Make sure that the GP Elite logo is facing to the front of the car.



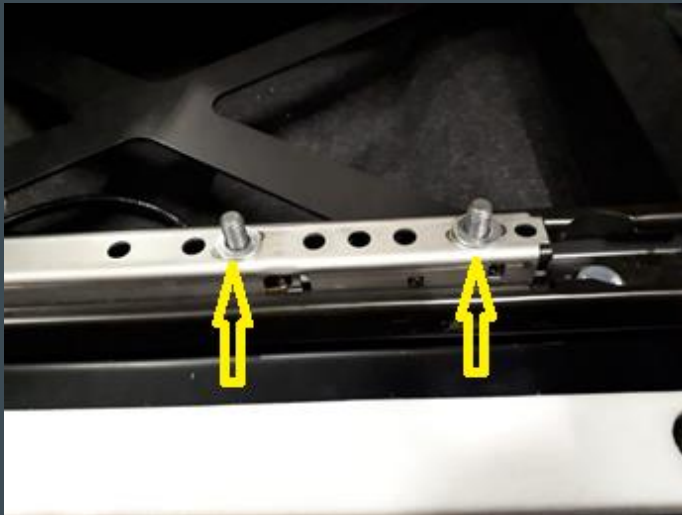


Once the frame is in the car, the two plastic strips (part 04) can be mounted on the frame and secured by the factory T50 seat bolt that also holds down the frame.

Make sure that the longer part of the strip is facing to the rear of the car.



For demonstration purposes the strips in the pictures are white. In the actual kit, they come in black so they blend in with the rest of the frame.

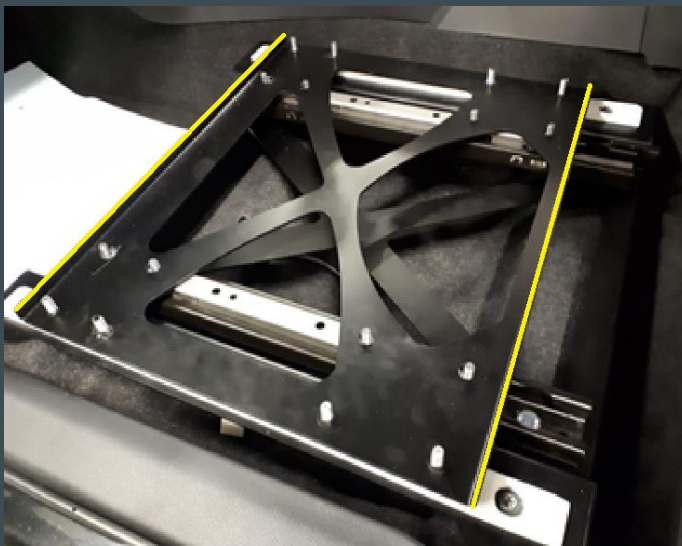


STEP 10

Parts needed:
1x part 002

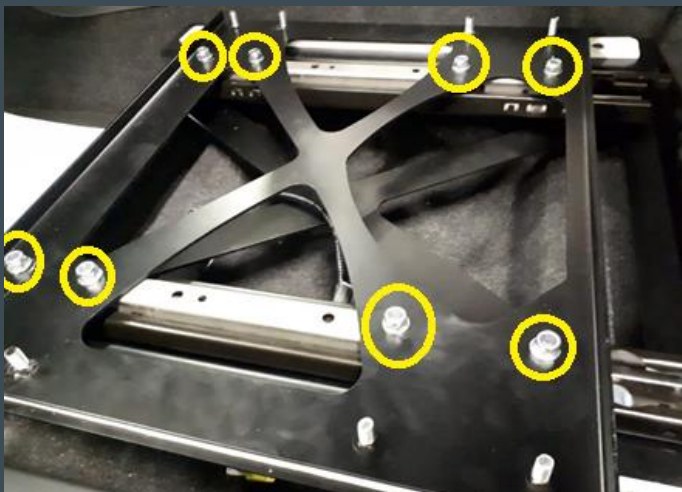
Before mounting the upper part of the frame, make sure that there is a washer on every one of the 8 studs on the seat rails.

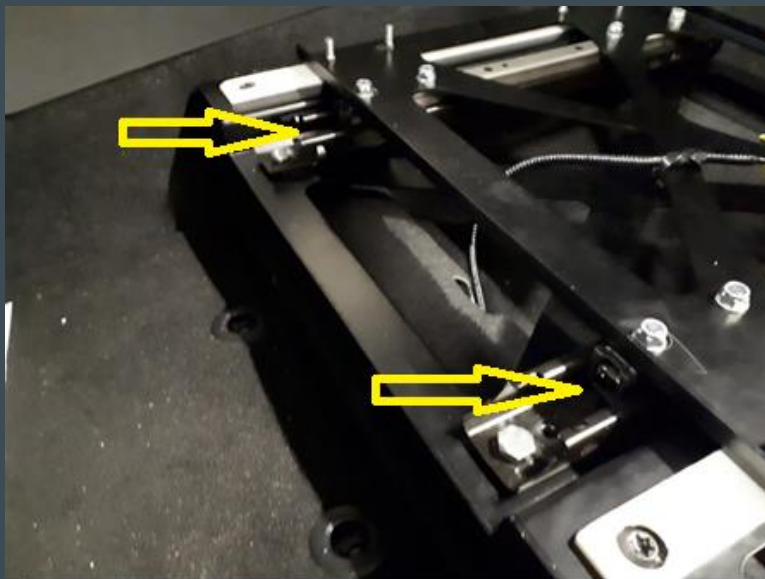
Once this is done, you can place the upper seat frame plate (part 02) on the rails. Make sure that the bent edges face up when installing the plate. These edges are marked yellow in the picture here left.



Note: There is only one way that this plate will fit.

Then, fasten the plate on the rails with a washer and a 8mm nut with nylon ring.





STEP 11

Slide the seat adjusting handle (part 03) in the original mounting holes in the seat rails. It should make a “click” when it locks into place.





STEP 12

Before mounting the seat, it is necessary to make a small modification on the plastic trim of the seat. On the side that has the seat recline handle, cut off 10 millimetres of plastic trim, as shown in the picture. Once cut, sand the edge with some scotch-brite to leave a smooth finish.



STEP 13

Remount the seat partially. Fasten the rear of the seat to the frame first, with the original 12mm nuts. Leave the front loose as shown in the picture. This is to make the next step easier.



STEP 14

Route the electrical wires for the seat through the seat frame in such a way that the cables don't get stretched while adjusting the seat. reconnect the plugs and zip tie the cables to the lower frame.



STEP 15

Fasten the front of the seat on the seat frame with the other four 12mm nuts that were originally used. Once this has been done, lower the seat to its lowest position and check if there is enough clearance from the plastic trim to the seat frame. Once this has been checked, then the installation is complete.