



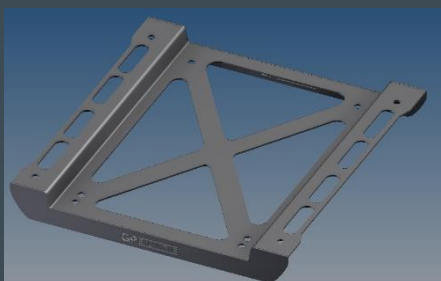
## TOYOTA YARIS GR SEAT LOWERING FRAME

---

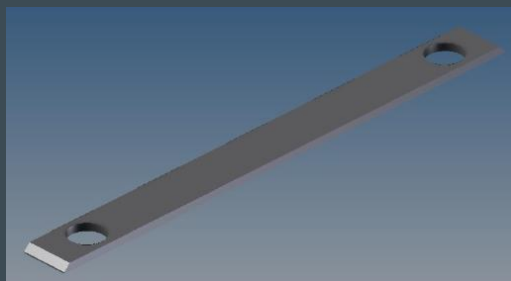
Installation Guide – Passenger Side

## PARTS INCLUDED IN THE KIT

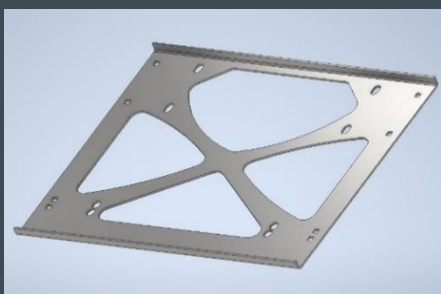
Part no.	Part name	Amount included
01	Lower seat frame plate	1
02	Upper seat frame plate passenger side	1
03	Seat handle	1
04	Plastic strip	2
05	M10 bolt	4
06	10mm washer	5
07	M10 nut	4
08	8mm washer	10
09	M8 nut	5
10	Small parker screw	2
11	M8 stud	2



Part 01: lower seat frame plate



Part 04: plastic strip



Part 02: upper seat frame plate



Part 11: M8 stud

## TOOLS REQUIRED

- T50 torx key - Could either be used with a ratchet or a torx wrench
- 13mm spanner or socket
- 12mm spanner - A ratchet won't fit in this application
- Small flat head screwdriver
- Zip ties
- Side cutters

## INSTALLATION



### STEP 1

Make sure that the ignition is turned off before moving on to the next step. Do not turn the ignition on during the installation process.



### STEP 2

Put the seat in its most far back position and raise the seat high. Then disconnect the electrical cables underneath the seat. The plugs are held together by a clip, use your finger or a small screw driver to press the release part of the clips.



### STEP 3

Remove the four T50 Torx bolts shown in the pictures. Start on the rear and then remove the front bolts. This prevents the seat from falling over while working on it. Before removing the seat entirely, make sure there is a protective cloth over the door sill. To prevent possible paint damage while removing the seat.



#### STEP 4

Once the seat has been removed, take off the plastic trim as shown on the picture on the left. Do this on the rear of the seat and on the seat rails.

These pieces won't be reused once the seat is reinstalled.

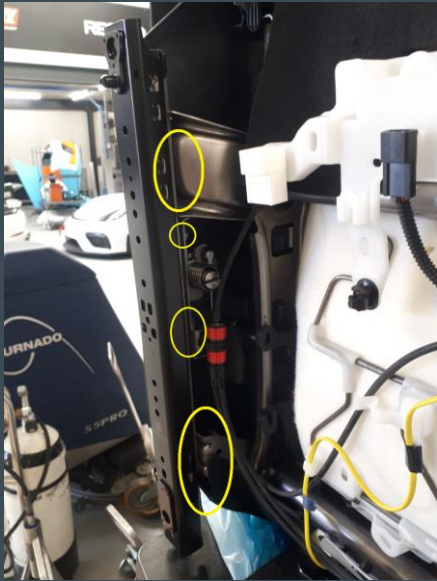


#### STEP 5

Unclip the plugs underneath the seat from their white plastic holder. They will be relocated once the seat is reinstalled into the car.

Do **NOT** cut any wires.





### STEP 6

Remove the seat rails. This is done by removing the nine 12mm nuts, two on one side, three on the other for the seat rails and 2 per side for back rest release (as shown in the pictures). Make sure that all nine are removed before removing the rails from the seat. The rails is now disconnected from the seat.



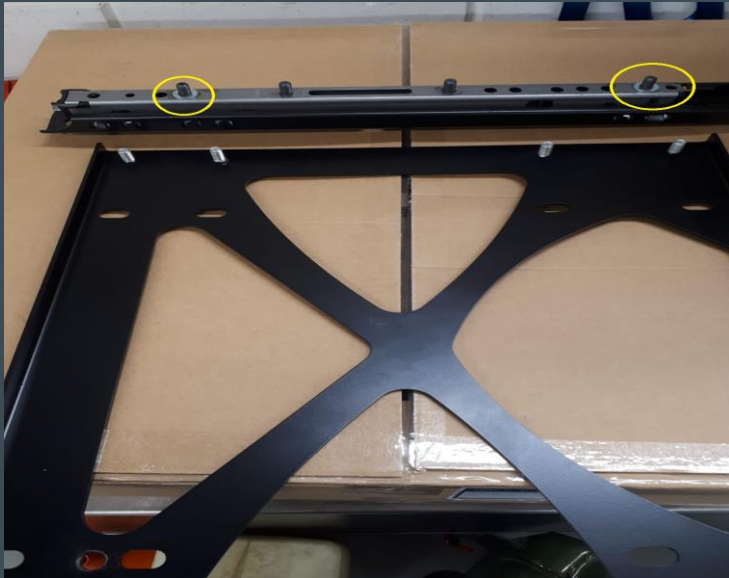


#### STEP 7

To remove the seat adjusting handle, use a small flat head screwdriver to push up this tab that is located inside the seat rail. Once the tab is pushed up you can remove the handle from this rail. Repeat this procedure for the other side. The seat handle can be kept as spare as it will be replaced later on by part 03.

Mark the seat rails, which side was which, since the left and right rails are not interchangeable on the passenger side.





#### STEP 8

Place five washers on each of the seat rail studs, these are on the studs that were mounted on the seat. then put the upper plate on (part 002).



Fasten the plate with the other included washers and nuts.



### STEP 9

Before mounting the seat, it is necessary to make a small modification on the plastic trim of the seat. On the side that has the seat recline handle, cut off 10 millimetres of plastic trim as shown in the picture. Once cut, sand the edge with scotch brite to leave a smooth finish.



### STEP 10

Use the supplied M10 bolts on the top side, the M10 nut and washer on the underside to fasten the seat rails to the frame. Make sure that the sides of the M10 bolt on the topside run longitudinally aligned with the seat rails. See the picture. This is to ensure that the seat rails can slide freely. Do this for the second seat rails as well.

For the passenger side, the rail is already mounted to the seat but it doesn't change the procedure.







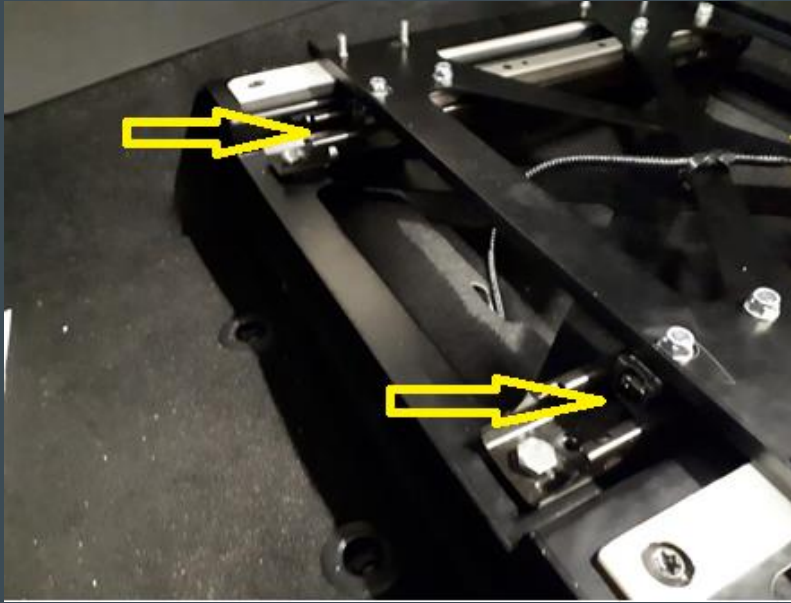
### STEP 11

Once the frame is in the car, the two plastic strips: Part 04 can be mounted on the frame and secured by the factory T50 seat bolt that also holds down the frame. Make sure that the longer part of the strip is facing to the rear of the car.

This is without the seat in place to aid in the explanation of the step.

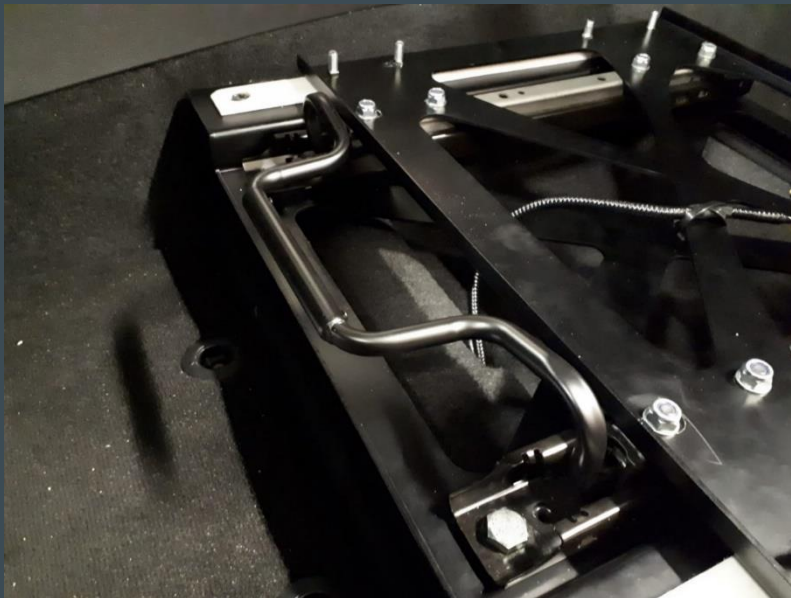


For demonstration purposes the strips in the pictures are white. In the actual kit, they come in black so they blend in with the rest of the frame.



### STEP 12

Slide the seat adjusting handle in the original mounting holes in the seat rails. It should make a “click” when it locks into place.





### STEP 13

Now the adjusting handle has been installed, slide the seat to the most far back position to reconnect the plugs that were disconnected in step 2. Fasten parts of the cables to the frames so that when adjusting the seat forwards and back, the cables do not get stretched.

Once this has been done, check if everything works as it is supposed to (airbag, seat heating, adjusting the seat etc.) Once this has been done, then the installation of the passenger side lowering kit is complete.