

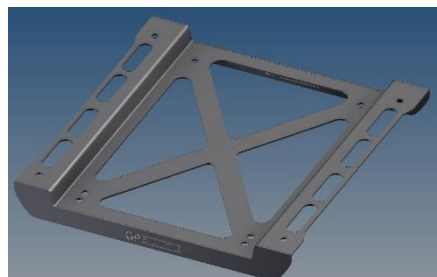


Toyota Yaris GR seat lowering frame installation guide

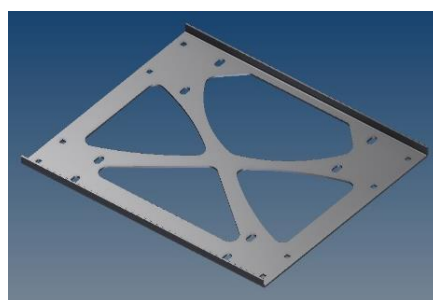
Version: 04-2022

Parts included in the kit:

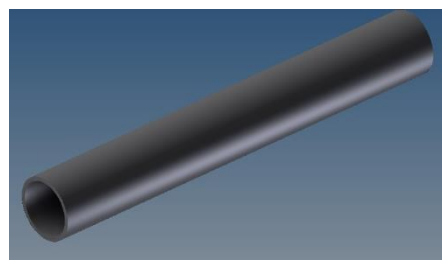
Part no.	Part name	Amount included
01	Lower seat frame plate	1
02	Upper seat frame plate	1
03	Seat handle tube	1
04	Plastic strip	2
05	M10 bolt	4
06	10mm washer	4
07	M10 nut	4
08	8mm washer	16
09	M8 nut	8
10	Small parker screw	2



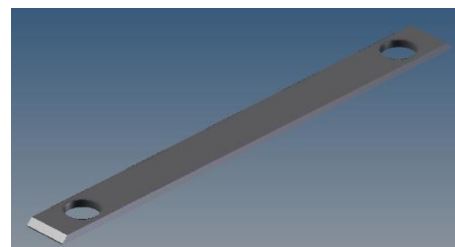
Part 01 lower seat frame plate



Part 02 upper seat frame plate



Part 03 seat handle tube



Part 04 plastic strip

Tools required

- T50 torx key, could either be used with a ratchet or a torx wrench
- 13mm spanner or socket
- 12mm spanner. A ratchet won't fit in this application.
- Small flat head screwdriver
- Small parker screwdriver
- 2,5mm metal drill

Paints

Primer

Paint in desired colour. Used in the instruction is Motip Rallye matt black.



Glue

Two part epoxy. Recommended is Innotech Repaplast Fix 2K plastic glue



Abrasives

320-400 grit sandpaper of medium course scotch brite.



Installation



Step 1

Make sure that the ignition is turned off before moving on to the next step. Do not turn the ignition on during the installation.



Step 2

Put the seat in its most far back position and raise the seat high. Then disconnect the electrical cables underneath the seat. The plugs are held together by a clip, use your finger or a small screw driver to press the release part of the clips.



Step 3

Remove the four T50 Torx bolts shown in the picture below. Start on the rear and then remove the front bolts. This prevents the seat from falling over while working on it. Before removing the seat entirely, make sure there is a protective cloth over the door sill. To prevent possible paint damage while removing the seat.



Step 4

Once the seat has been removed, take off the plastic trim as shown on the picture on the left.

Do this on the rear of the seat and on the seat rails. These pieces won't be reused once the seat is reinstalled.



Step 5

Unclip the plugs underneath the seat from their white plastic holder.

They will be relocated once the seat is reinstalled into the car.

Do **NOT** cut any wires.



Step 6

Remove the seat rails. This is done by removing the eight 12mm nuts, four on each side of the seat, as shown on the picture on the right. Make sure that all eight are removed before removing the rails from the seat. The rails are now disconnected from the seat.





Step 7

To remove the seat adjusting handle, use a small flat head screwdriver to push up this tab that is located inside the seat rail as shown in the picture. Once the tab is pushed up you can remove the handle from this rail. Repeat this procedure for the other side. Put the seat handle aside as it will be modified to fit the frame later in the installation.





Step 8

Parts needed:

1x Part: 001

4x Part: M10 bolt

4x Part: M10 nut with nylon ring

4x Part : 10MM washer

The seat rails.



To mount the seat rails to the frame (part 001) make sure that the locator pin on the seat rails is in the second hole as shown in the picture.





Use the supplied M10 bolts on the seat rails, and the nut and washer on the underside to fasten the seat rails to the frame. Make sure that the sides of the M10 bolt on the topside run longitudinally aligned with the seat rails. See the picture here left. This is to ensure that the seat rails can slide freely. Do this for the second seat rails as well.





Step 9

Modifying the seat adjustment handle.

Measure and mark the middle of the handle as shown here right.

Then mark 8 centimetres from the middle to either side. once this has been marked, cut the handle with either a pipe cutter or a metal saw. The use of the pipe cutter is recommended because it leaves a cleaner edge. The finished result should look like the picture below.





Step 10

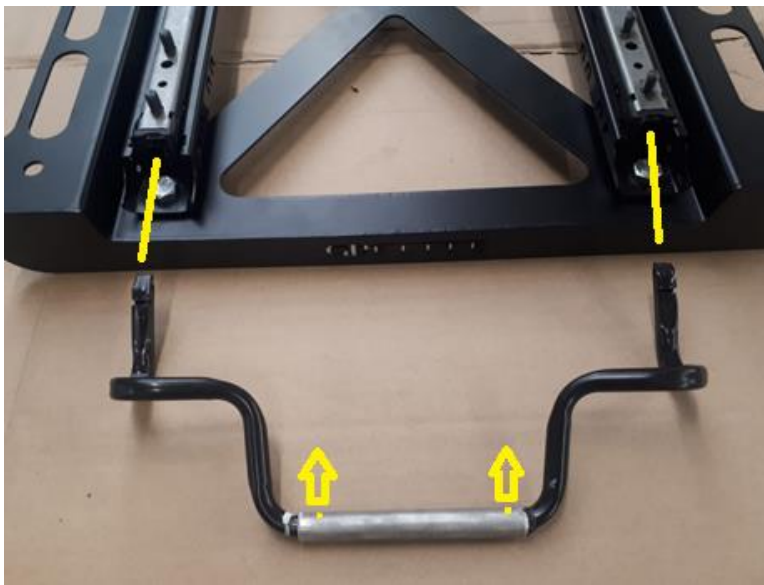
Part needed:

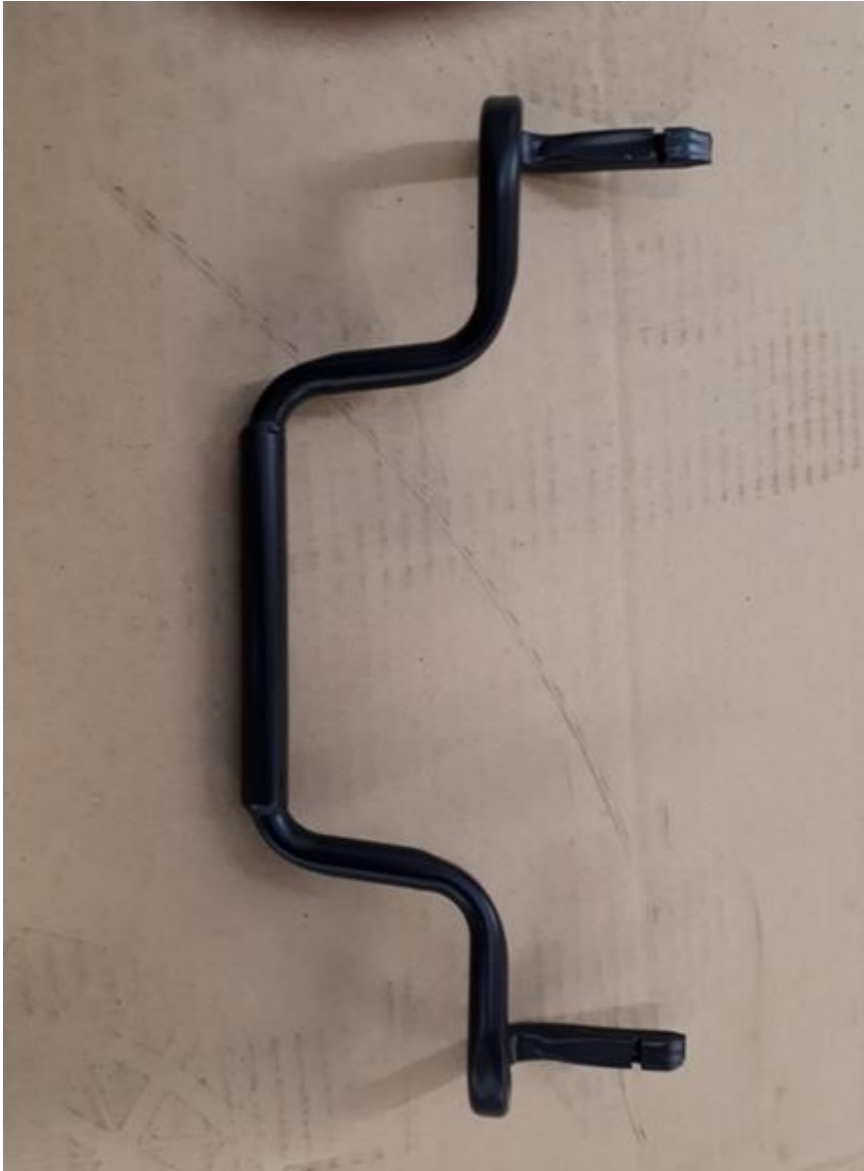
Part: 03

Glue

Now the two halves of the handle need to be reassembled. For this you need part 03.

Sand the handle on the yellow traced area as shown in the picture. Make sure it is fully degreased. Fill part 008 with 10 millilitres of mixed epoxy and hardener. Then slide the two halves of the handle in part 008. Make sure that the handle is aligned with the seat rails as shown in the picture left, and that the pre-drilled holes in part 008 face the seat frame as indicated by the arrows





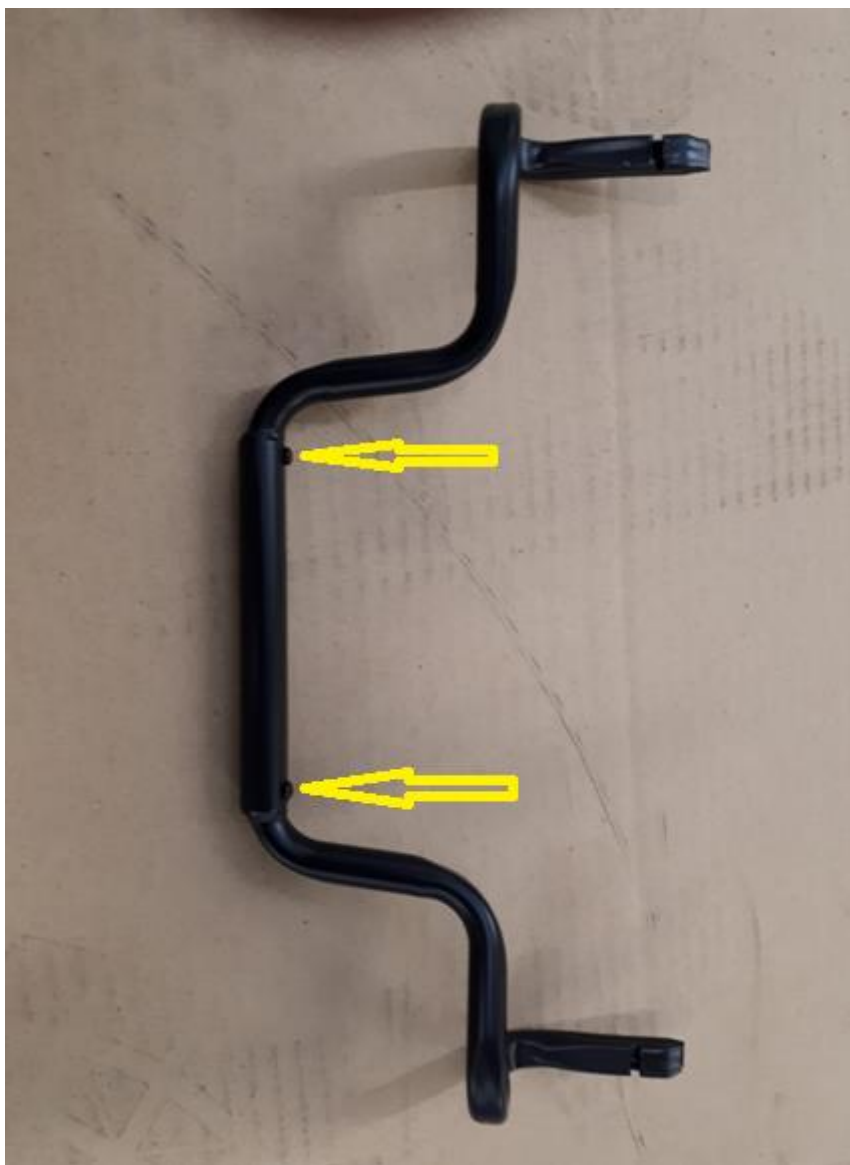
Step 11

Supplies needed:

Abrasives: 320-400 grit sandpaper of medium fine scotch brite.

Paint: primer and lacquer (motip rallye matt black).

Once all the parts are glued and the glue is dry, the part is ready to be painted. Use a piece of scotch bright or 320-400grit sandpaper to scuff up the part. Once it is scuffed, degrease the part and paint it. First with two coats of primer and then 3 light coats of lacquer. We used Motip primer and Rallye matt black paint.



Step 12

Paint is dry:

Use the pre drilled holes in part 008 as a guide to drill into the handle with a 2,5mm drill. It should only go in 10 millimetres to prevent breaking through the other side. Now the included small parker screws can be screwed in.



Step 13

Installation into the vehicle.

Parts needed:

2x part 04

Before placing the frame in the car make sure there is a protective mat over the cars door sill. Then put the lower part of the seat frame with the seat rails into the car as shown here on the left.

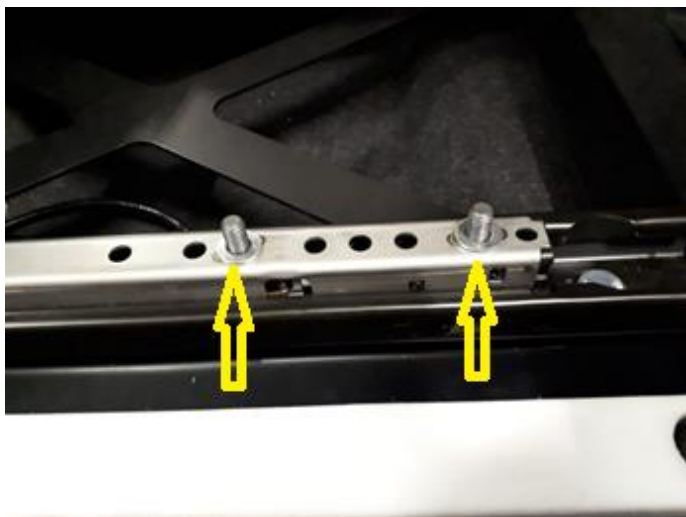
Make sure that the GP-Elite logo is facing to the front of the car.





Once the frame is in the car, the two plastic strips, part 04, can be mounted on the frame and secured by the factory T50 seat bolt that also holds down the frame. Make sure that the longer part of the strip is facing to the rear of the car.





Step 14

Parts needed:

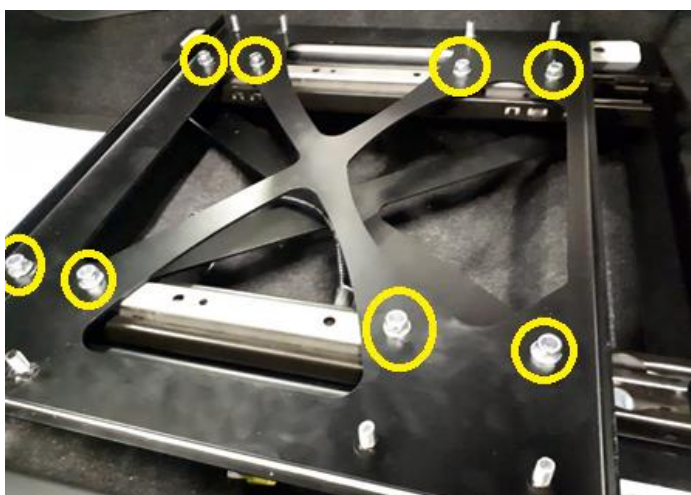
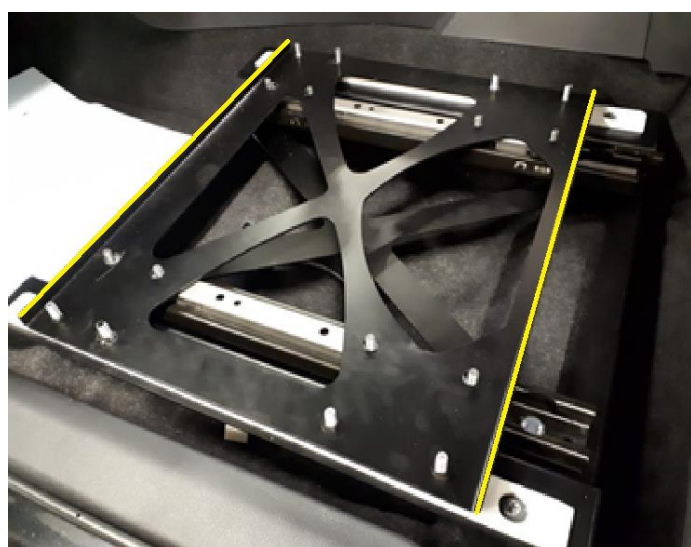
1x part 002

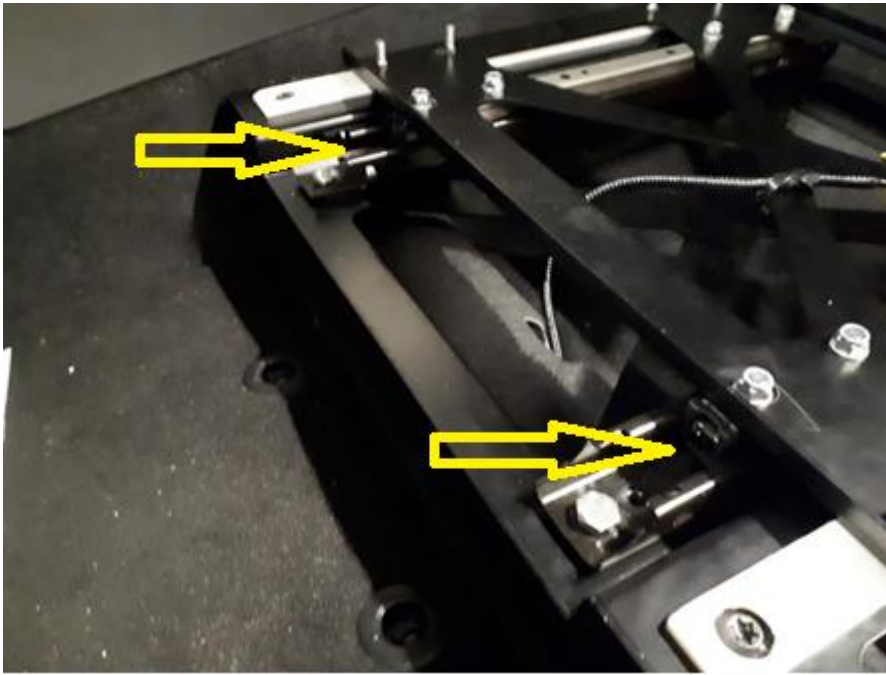
Before mounting the upper part of the frame, make sure that there is a washer on every one of the 8 studs on the seat rails.

Once this is done, you can place the upper seat frame plate on the rails (part02). Make sure that the bent edges face up when installing the plate. These edges are marked yellow in the picture below.

Note: There is only one way that this plate will fit.

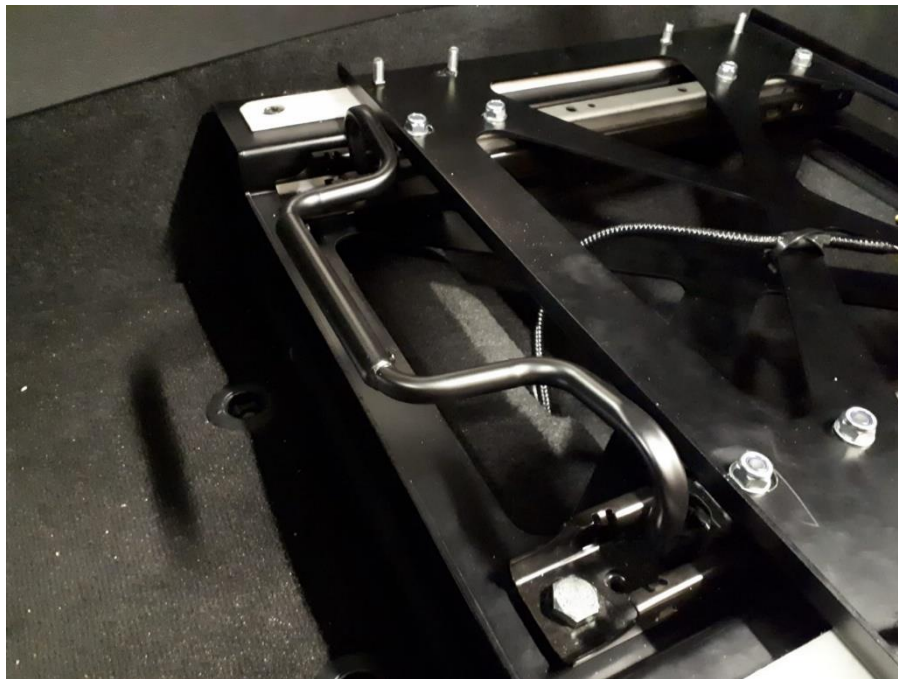
Then fasten the plate on the rails with a washer and a 8mm nut with nylon ring.





Step 15

Slide the seat adjusting handle in the original mounting holes in the seat rails. It should make a “click” when it locks into place.





Step 16

Before mounting the seat, it is necessary to make a small modification on the plastic trim of the seat. On the side that has the seat recline handle, Cut 10milimeter of plastic trim away as shown in the picture on the left. Once cut, sand the edge with some scotch brite to leave a smooth finish.



Step 17

Remount the seat partially. Fasten the rear of the seat to the frame first with the original 12mm nuts. Leave the front loose as shown in the picture. This is to make the next step easier.



Step 17

Route the electrical wires for the seat through the seat frame in such a way that the cables do not get stretched when adjusting the seat. Reconnect the plugs and zip tie the cables to the lower frame.



Step 18

Fasten the front of seat on the seat frame with the other four (4) 12mm nuts that were originally used. Once this has been done, lower the seat to its lowest position and check if there is enough clearance from the plastic trim to the seat frame. Once this has been checked, then the installation is complete.